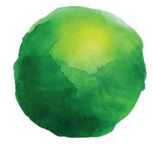


# MyDay.<sup>®</sup> Your 1st choice for more patients<sup>1\*</sup>



CooperVision<sup>®</sup>



<sup>1</sup>\*MyDay<sup>®</sup> family provides coverage for 84% of prescriptions.  
<sup>##</sup>Range defined as all 1-day brands and segments: sphere, toric and multifocal.  
CooperVision<sup>®</sup> data on file, 2021, 2020–2023 Plastic Bank Contract Agreement.

MyDay<sup>®</sup> sphere | toric | multifocal

# MyDay<sup>®</sup> family. Your 1st choice...

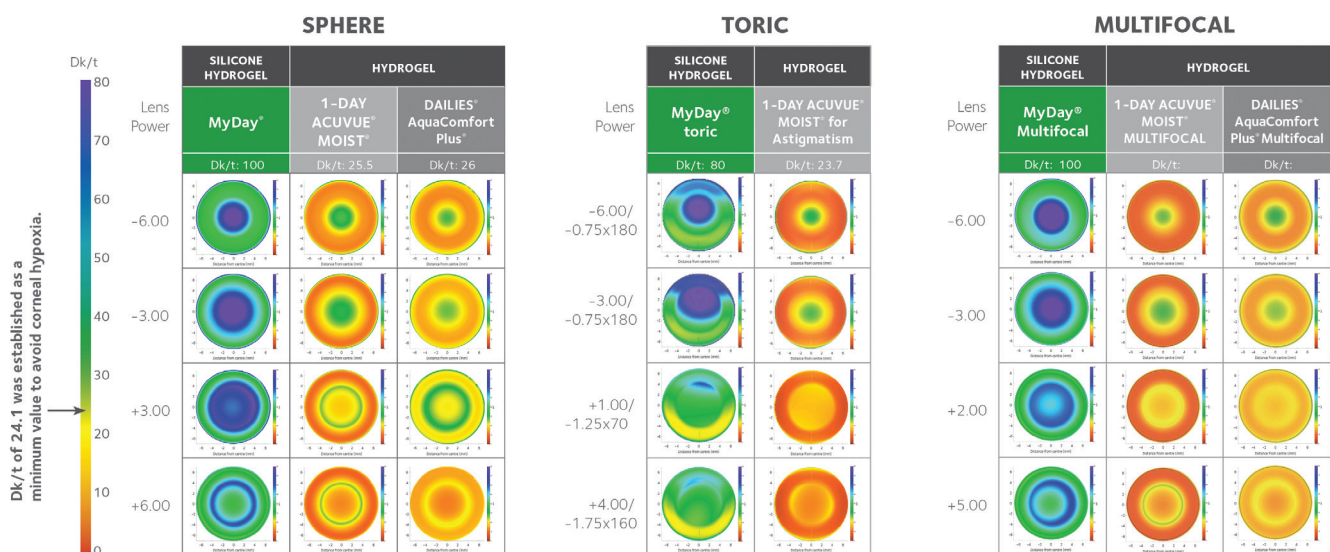
...for performance

MyDay<sup>®</sup>'s advanced material chemistry, coupled with optimum lens design, delivers a high-performing 1-day lens that's designed for unsurpassed comfort.<sup>2\*</sup>



	FEATURES		BENEFITS
Comfort	<p>A modulus of 0.4 MPa, creating a soft lens, yet designed to be easy to handle<sup>3</sup></p>	<p>A softer, more comfortable wearing experience<sup>4</sup></p>	<b>Comfort that lasts all day</b>
Health	<p>Our most breathable silicone hydrogel daily disposable lens<sup>4</sup></p>	<p>UV blocking<sup>†</sup></p>	<b>High level of oxygen transmissibility<sup>5</sup></b>
Convenience	<p>Daily disposable</p>		<b>Easy to use, convenient</b>

...for high oxygen transmissibility across the whole lens



\*MyDay<sup>®</sup> clinical studies 1-week DW compared to 1-Day Acuvue<sup>®</sup> Moist, Dailies Total1<sup>®</sup> and Acuvue<sup>®</sup> Oasys 1-Day.

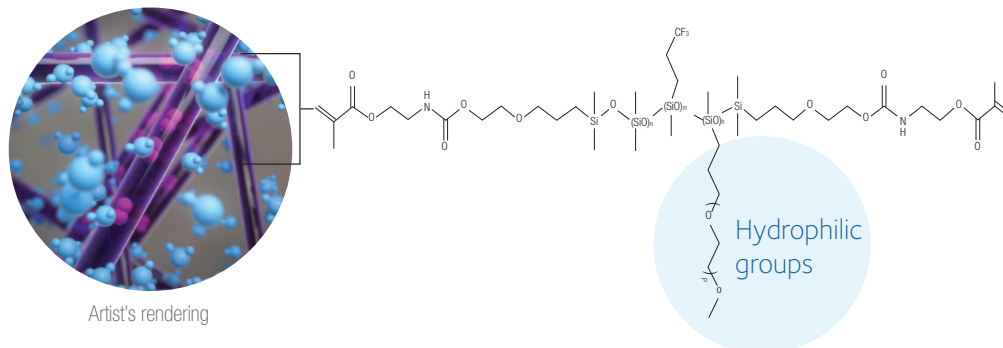
†Warning: UV-absorbing contact lenses are not substitutes for protective UV-absorbing eyewear, such as UV-absorbing goggles or sunglasses, because they do not completely cover the eye and surrounding area. Patients should continue to use UV-absorbing eyewear as directed.

## ...for Aquaform® Technology – The foundation of high performance

The complete MyDay® family is underpinned by Aquaform® Technology, as featured in Biofinity®, formulated for unsurpassed comfort.<sup>2\*</sup>

- Unique, proven silicone hydrogel technology used in the MyDay® and Biofinity® families<sup>6</sup>
- Long silicone chains allow for less raw silicon and a higher water content for:
  - High oxygen transmissibility – clear, white and healthy eyes<sup>5</sup>
  - Low modulus – enhances comfort and fitting flexibility

**Hydrophilic groups on the silicone macromer backbone enable inherently wettable contact lens materials to attract and retain moisture**



## Why choose the MyDay® family for more patients?

- Familiarity with the lens material, benefits and fitting process
- Confidence that your 1st-choice 1-day lens is available for all your patients
- Allows you to combine designs
- Keeps more patients in the contact lens brand they know and trust as their vision needs change

\*MyDay® clinical studies 1-week DW compared to 1-Day Acuvue® Moist, Dailies Total1® and Acuvue® Oasys 1-Day.

# MyDay<sup>®</sup>.

## Excellent vision and clarity across the power range



Featuring the same high-performance optics  
as the Biofinity<sup>®</sup> family for clear, crisp and  
sharp vision



Aberration Neutralising System<sup>™</sup>. Unique aspheric front surface design helps neutralise spherical aberration in both the lens and the eye for sharp vision across the power range.



Highly rated for visual acuity and subjective vision performance – comparable with Biofinity<sup>®</sup>.<sup>6</sup>



MyDay<sup>®</sup> sphere | toric | multifocal



Choose MyDay<sup>®</sup> first  
to provide vision correction for  
99.9% of spherical prescriptions<sup>7</sup>



# MyDay<sup>®</sup> toric.

Provides vision correction for 95% of astigmatic patients<sup>8</sup>



MyDay<sup>®</sup> toric now matches Biofinity<sup>®</sup> toric's prescription range 100%, so you can prescribe the premium performance of MyDay<sup>®</sup> toric to the vast majority of your patients<sup>9</sup>

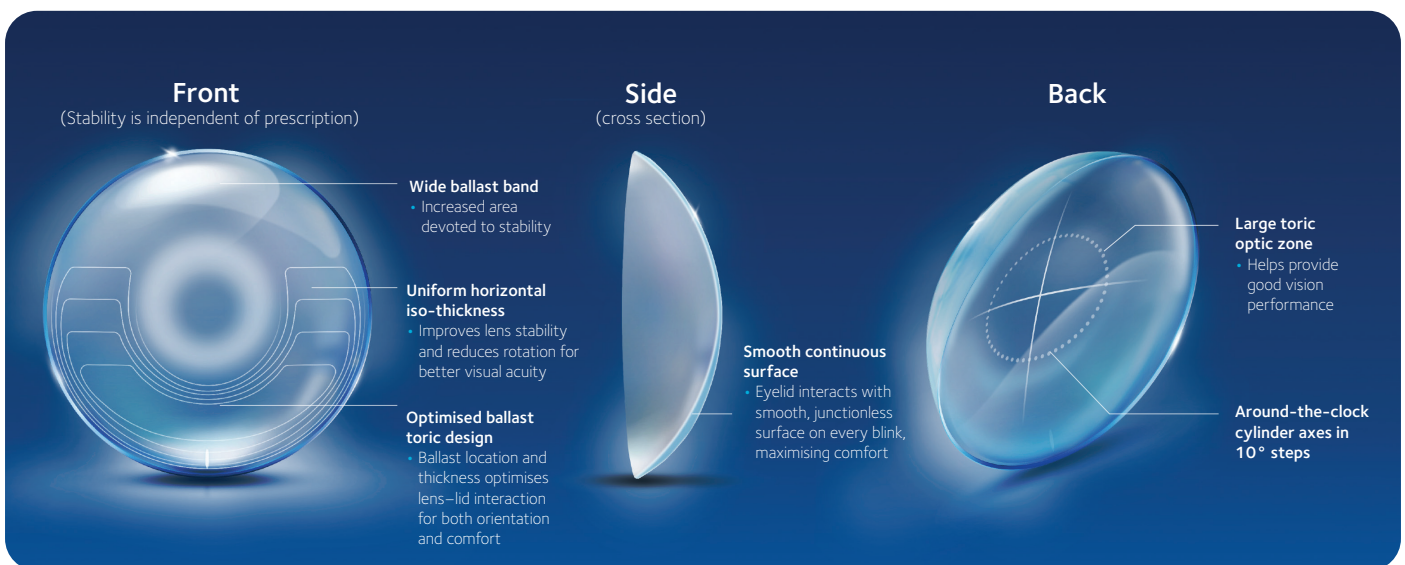
4392  
prescription options now available

- Offers an extensive parameter range giving all combinations of spheres, cyls and axes
- More than 80% additional prescription options vs other 1-day torics<sup>9-12</sup>

Features Optimised Toric Lens Geometry<sup>™</sup> to deliver the consistent centration, stable fit and excellent visual acuity both you and your patients can depend on.

- Superior rotational recovery vs. other toric lens designs<sup>13,14</sup>

Optimised Toric Lens Geometry<sup>™</sup> featured in both Biofinity<sup>®</sup> toric and MyDay<sup>®</sup> toric



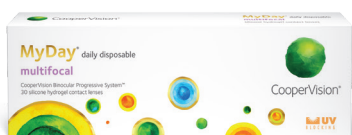
Choose MyDay<sup>®</sup> toric first  
to fit 9 out of 10 of your  
astigmatic patients<sup>15</sup>





# MyDay<sup>®</sup> multifocal.

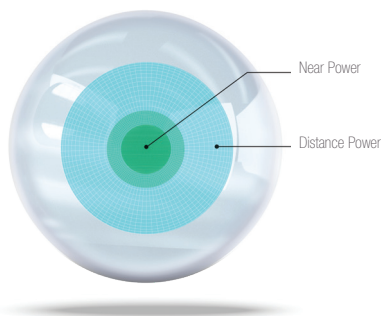
Success is simple for all stages of presbyopia<sup>16,17\*</sup>



- Binocular Progressive System<sup>™</sup> is an innovative three-add multifocal system that uses different lens designs to optimise vision for all levels of presbyopia<sup>16</sup>

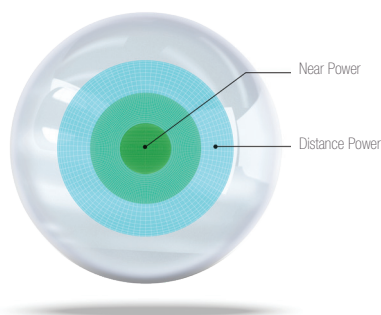
## LOW ADD

Aspheric centre-near design



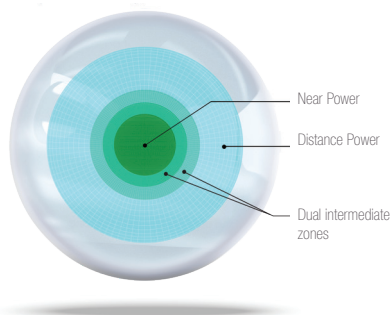
## MEDIUM ADD

Aspheric centre-near design



## HIGH ADD

Spherical centre-near design, with dual intermediate zones



For illustrative purposes only

\*When using the fitting guide.



Choose MyDay<sup>®</sup> multifocal for  
first-fit success in 83%  
of your patients and 98% with  
2 pairs of lenses or fewer<sup>16,17\*</sup>

\*When using the fitting guide.

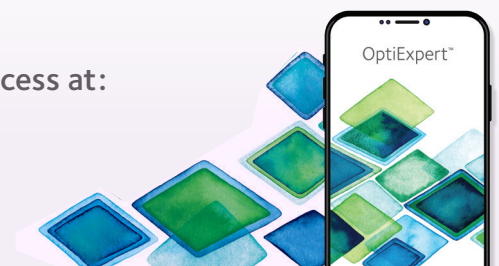


**OptiExpert™**

Download OptiExpert™ from the App Store or Google Play, or access at:

[www.coopervision.net.au/practitioner/tools-and-calculators](http://www.coopervision.net.au/practitioner/tools-and-calculators)

[www.coopervision.co.nz/practitioner/tools-and-calculators](http://www.coopervision.co.nz/practitioner/tools-and-calculators)



# MyDay<sup>®</sup> multifocal fitting guide

## Initial lens selection

### STEP 1

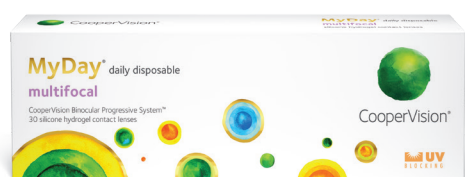
Using up-to-date spectacle prescription, determine spherical equivalent distance power (corrected for vertex distance).




### STEP 2

Determine sensory eye dominance with +1.00D blur method. If inconclusive, use +1.50D or more.

### STEP 3

Select distance sphere power for each eye with add powers as indicated below.



INITIAL LENS SELECTION		
 Spectacle Rx add	 Dominant eye	 Non-dominant eye
+0.75D to +1.25D	LOW	LOW
+1.50D to +1.75D		MED
+2.00D to +2.50D		HIGH


## VISION ASSESSMENT


- For best results, allow wearer to experience vision outside the testing room for 10-15 minutes
- Check vision with both eyes open and room lights on
  - For **distance vision**, assess in surrounding environment under normal lighting conditions
  - For **near vision**, assess using a mobile phone or other reading material
- If vision acceptable, dispense trial lenses
- If vision not acceptable, follow the lens optimisation steps described next

## Lens optimisation

Have patient keep both eyes open and optimise using handheld lenses or a flipper; do not use a phoropter.



DISTANCE VISION ENHANCEMENT	
 Dominant eye	Adjustment steps $\pm 0.25D$

NEAR VISION ENHANCEMENT	
 Non-dominant eye	Adjustment steps $\pm 0.25D$

### CLINICAL TIPS

- Prescribe maximum plus power for binocular distance vision; do not over-minus
- Use loose handheld lenses or flipper for over-refractions. Do not use a phoropter
  - If distance vision needs to be enhanced, offer  $\pm 0.25D$  to the dominant eye. If distance vision improves, check that near vision is maintained. Adjust the lens sphere power as applicable for the dominant eye. **DO NOT CHANGE ADD POWER**
  - If near vision needs to be enhanced, offer  $\pm 0.25D$  to the non-dominant eye. If near vision improves, check that distance vision is maintained. Adjust the lens sphere power as applicable for the non-dominant eye. **DO NOT CHANGE ADD POWER**



# MyDay<sup>®</sup>

## Your 1st choice for more patients<sup>1\*</sup>

	Material	Water content	Base curve (mm)	Diameter (mm)	Sphere power (DS)	Cylinder (DC)	Axes	Add power	Centre thickness @ -3.00D (mm)	Dk	Dk/t @ -3.00D	Lens design	Handling tint	Wear indications	UV inhibitor <sup>1</sup>	Replacement frequency
<b>SPHERE</b>	stenfilcon A	54%	8.4	14.2	+0.25 to +5.00D (0.25D) +5.50 to +8.00D (0.50D) -0.25 to -6.00D (0.25D) -6.50 to -12.00D (0.50D)				0.08	80	100	Aspheric Optics	Light blue	Daily wear	Class 2	Daily
<b>TORIC</b>	stenfilcon A	54%	8.6	14.5	Plano to +6.00DS (0.25D steps) +6.50 to +8.00DS (0.50D steps) -0.25 to -6.00DS (0.25D steps) -6.50 to -10.00DS (0.50D steps)	-0.75, -1.25, -1.75, -2.25	10 to 180 (10° steps)		0.10	80	80	Optimised Toric Lens Geometry™	Light blue	Daily wear	Class 2	Daily
<b>MULTIFOCAL</b>	stenfilcon A	54%	8.4	14.2	+8.00D to -10.00D (0.25D steps) -10.50D to -12.00D (0.50D steps)			Low (+0.75 to +1.25D spectacle Rx add) Med (+1.50 to +1.75D spectacle Rx add) High (+2.00 to +2.50D spectacle Rx add)	0.08	80	100	Binocular Progressive System™	Light blue	Daily wear	Class 2	Daily

\*MyDay<sup>®</sup> family provides coverage for 84% of prescriptions.<sup>1</sup> †Warning: UV-absorbing contact lenses are not substitutes for protective UV-absorbing eyewear, such as UV-absorbing goggles or sunglasses, as they do not completely cover the eye and surrounding area. Patients should continue to use UV-absorbing eyewear as directed.

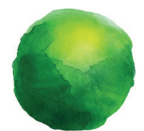
MyDay<sup>®</sup>  
sphere | toric | multifocal



Contact your CooperVision Business Development Manager or visit [www.coopervision.net.au/www.coopervision.co.nz](http://www.coopervision.net.au/www.coopervision.co.nz) to find out more.

Read the instructions for use (<https://coopervision.net.au/patient-instruction>)

\*One-day contact lenses are defined as orders for those products and includes product sold and distributed by CooperVision in Australia and New Zealand. Plastic neutrality is established by purchasing credits from Plastic Bank. A credit represents the collection and conversion of one kilogram of plastic that may reach or be destined for waterways. CooperVision purchases credits equal to the weight of plastic in our one-day contact lens orders in a specified time period. One-day contact lens plastic is determined by the weight of plastic in the blister, the lens and the secondary package (outer carton), including laminates, adhesives, and auxiliary inputs (e.g. ink). References: 1. CooperVision<sup>®</sup> data on file 2022; Rx coverage database n=203,946 eyes; 14 to 41 years for MyDay<sup>®</sup> sphere and MyDay<sup>®</sup> toric; 42 to 70 years for MyDay<sup>®</sup> multifocal. 2. CooperVision<sup>®</sup> data on file, 2013, 2015 & 2017; MyDay<sup>®</sup> clinical studies 1-week DW compared to 1-Day Acuvue<sup>®</sup> Moist, Dailies Total1<sup>®</sup> and Acuvue<sup>®</sup> Oasys 1-Day. 3. CooperVision<sup>®</sup> data on file 2019. Multi-visit study to assess handling performance and dehydration characteristics for 4 DD Contact Lenses in 20 contact lens wearers. 4. CooperVision<sup>®</sup> data on file. Compared among CooperVision<sup>®</sup> daily disposable, silicone hydrogel contact lenses. 5. Brennan NA. Beyond Flux: Total Corneal Oxygen Consumption as an Index of Corneal Oxygenation During Contact Lens Wear. Optom Vis Sci. 2005;82(6):467-472. 6. CooperVision<sup>®</sup> data on file 2019. Randomised, double-masked, crossover study, habitual CL wearers fitted with Biofinity<sup>®</sup> for one month then MyDay<sup>®</sup> daily disposable for one week. N=55. 7. CooperVision<sup>®</sup> data on file 2020. Rx coverage database n=120,406 eyes for Rx with <0.75DC; 14 to 70 years. 8. CooperVision<sup>®</sup> data on file 2021; Rx coverage database n=83,540 eyes; 14 to 70 years. 9. MyDay toric 4392 prescription options (same as Biofinity toric). 10. 2300 SKUs for PRECISION1<sup>®</sup> for Astigmatism, <https://www.mylcon.com/au/professional/contact-lenses/daily/precision1-for-astigmatism/> Cited February 2023. 11. 2300 SKUs for DAILIES Total1<sup>®</sup> for Astigmatism, <https://www.mylcon.com/au/professional/contact-lenses/daily/dailies-total1-for-astigmatism/> Cited February 2023. 12. 2320 SKUs for Acuvue<sup>®</sup> Oasys<sup>®</sup> 1-Day for Astigmatism, 1540 SKUs for 1-Day Acuvue<sup>®</sup> Moist for Astigmatism, 2326 SKUs for Biotrue ONEday<sup>®</sup> for Astigmatism, ODMA Eye Talk Reference Guide, 2023. 13. In primary gaze. 14. Momeni-Moghaddam, H *et al.* Comparison of fitting stability of the different soft toric contact lenses. Contact Lens & Anterior Eye 2014; 37(5): 346-350. Optimized Toric Lens Geometry™ compared to available prism ballast, precision balance and accelerated stabilization toric lens design. 15. CooperVision<sup>®</sup> data on file 2021; Rx coverage database n=83,540 eyes; 14 to 70 years; coverage for 89%. 16. CooperVision<sup>®</sup> data on file, 2020. Prospective, double-masked, bilateral, one-week cross-over UK dispensing study with MyDay<sup>®</sup> daily disposable multifocal and 1-Day Acuvue<sup>®</sup> Moist Multifocal; n=104 habitual multifocal contact lens wearers. 17. CooperVision<sup>®</sup> data on file, 2021. Prospective, subject-masked, randomised, bilateral, two-week dispensing study at 5 US sites with MyDay<sup>®</sup> daily disposable multifocal and Dailies Total1<sup>®</sup> Multifocal; n=58 habitual multifocal contact lens wearers. MyDay<sup>®</sup> and CooperVision<sup>®</sup> are registered trademarks of the Cooper Companies, Inc. and its subsidiaries. EMVCO00922 ©2023 CooperVision.



CooperVision<sup>®</sup>